



Stock Code: 002979

# Your Reliable Motion Control Partner

Company Presentation

[www.leadshine.com](http://www.leadshine.com)



# Company Overview



Headquarters in  
Shenzhen



Industrial Park in  
Shanghai



Manufacturing Facilities  
in Shenzhen

- Founded in **1997**
- **Public Listed Company in China (002979.SZ)**
- **Dedication in Motion Control**  
Stepper/Servo systems, Motion Controllers, PLC Control systems, I/O Modules, Encoders
- **A leading supplier of motion control products and solutions in the world**
- **Customer Oriented, Technology Oriented, Forever Improving, Sharing of Success**

**10,000+**  
Global Partners

**30,000,000+**  
Installed Axes

# Company Overview



**20 +**  
years

History



**200 +**

R&D Engineers



**1,200 +**

Employees



**5**

Wholly-owned  
subsidiaries



**60 +**  
COUNTRIES

CLIENT  
55

# Milestones



## 1997

### Innovation

**1997**

Founded in Shenzhen

**1999**

1st Motion controller launched

**1999**

1st Stepper Drive released

**2002**

Two Patents granted

## 2007

### Development

**2003**

Awarded SW copyrights afterwards

**2004**

ISO9001 QM certificated

**2005**

Digital stepper drive launched

**2007**

Leadshine becomes the first bran of stepper in china

## 2012

### Solidarity

**2008**

Chinese 1st Digital stepper drive DM series launched

**2009**

Digital Dc Servo drive launched

**2011**

Chinese 1st easy servo launched

## 2018

### Solidarity

**2012**

Chinese 1st integrated motor launched

**2013**

L5 series AC Servo launched

**2015**

L6 series EtherCAT Servo launched

**2016**

EM3 series open loop EtherCAT stepper launched

## 2022

### Cooperation

**2017**

CS3E series closed loop EtherCAT stepper system launched

**2019**

EL8 Series advanced servo system released ISO9001 QM certificated

**2020**

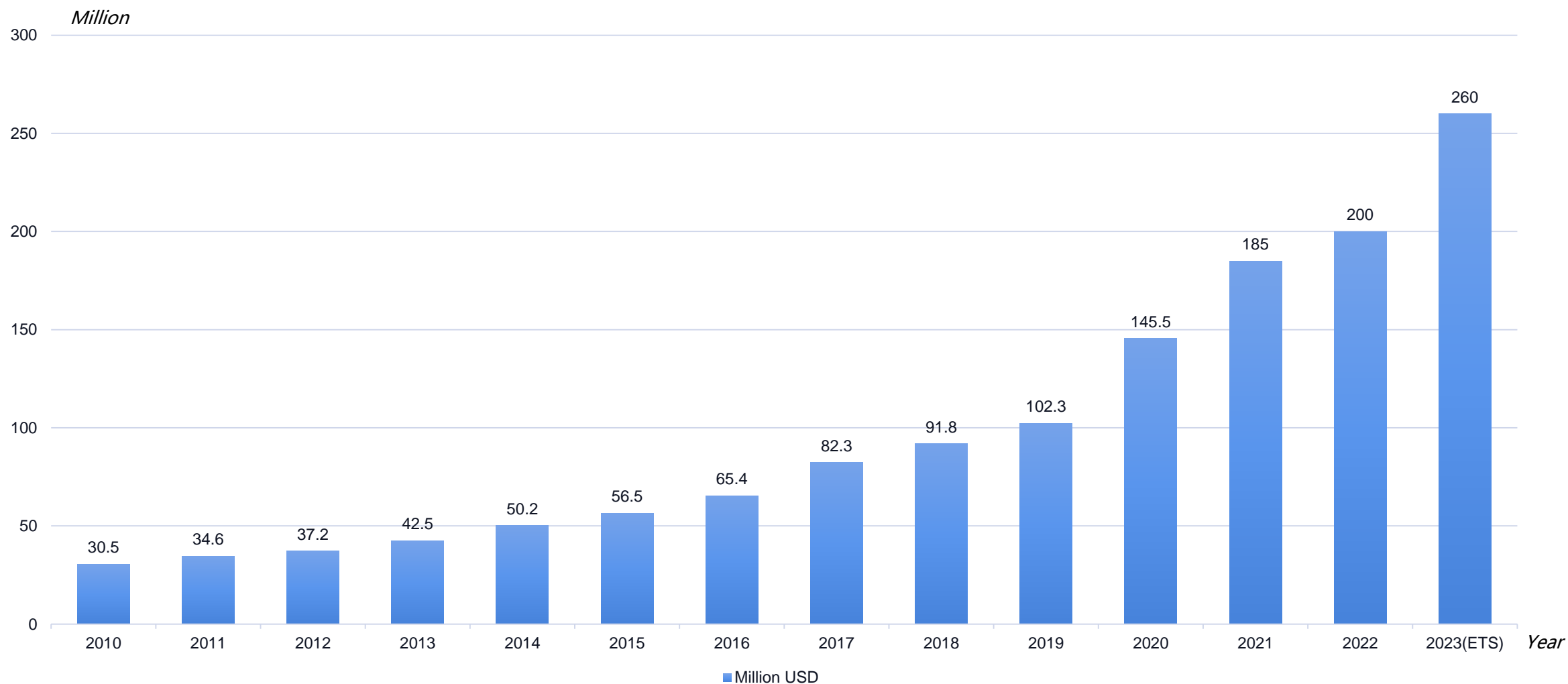
Public listed (002979.SZ)

**2022**

PROFINET drive product launched

.....

# Revenue Growth



# Leadshine Founder



## Dr. Warren Li

- Received a PhD in Robotics and Automation from Massachusetts Institute of Technology (MIT) in 1990.
- Has worked as an associate professor at WSU State University in Michigan, the Hong Kong University of Science and Technology, and meanwhile served as a technical consultant for many high-tech companies in the United States, Hong Kong, etc.
- Member of American Society of Mechanical and Electrical Engineers (ASME), American Institute of Electronic Engineers (IEEE), International Society of Control System Engineers (ICS), etc.
- Vice President of China Engraving and Cutting Industry Alliance, Vice President of Shenzhen Robotics Association, Executive Director of Guangdong Automation Association



## Industry leadership

- Won the "Industrial Achievement Award" at China Automation Annual Conference
- Won the medal of "Shenzhen Electronic Equipment Industry Model Worker"
- Won the 2017 CAIMARS "Intelligent Service Leader" Award

# Business Philosophy



Customer  
Oriented

Continuing  
Innovation

Insisting  
Team-work

Pursuing  
Excellence

Sharing  
Success

## Our mission

Focus on challenges our customers face; provide advanced and competitive motion control products and solutions; create maximum value for our customers

# Organization Structure



## Leadshine Group

Independent auditor

Board of directors

Board of supervisors

## Wholly-owned subsidiary

Leadshine Drive

Leadshine Motor

Leizhi Control

Lingxi Encoder

## Industry and Regional Deployment

**BU1**  
3C& New energy

**BU2**  
Machine Tools

**BU3**  
Logistics

**BU4**  
Electronic & Semiconductor

**BU5**  
Others

**Overseas market**

# Our Field



**OPERATOR**



**MACHINES**



**Controllers**



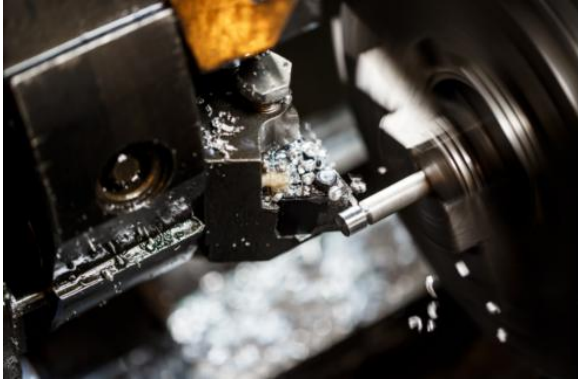
**Drives**



**Motors**

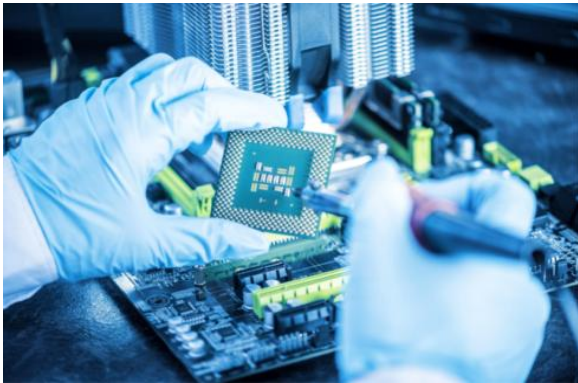


# Application



CNC Machinery

CNC Laser



Electronics & Semiconductor



Logistics & AGV

# Application



Renewable Energy



Medical



Robotic



Packaging



# CONTINUING INNOVATION

Improve Customers'  
Core Competitiveness

# Product Family



## Industrial Automation Solutions

### Control & PLC Products



### Drive Products



### Motor Products



# Motion Controller



## Controller



- LC2000 series large controller
- LC5000 series large controller

## PLC



- MP series PLC
- MC500 series general PLC
- SC5-C series economic PLC

## I/O Module



- R1 series economic I/O module
- R2 series general I/O module
- R3 series I/O module

# Stepper Drive



## DM-E Series



PUL&DIR

- Step&dir or CW/CCW control
- Auto-tuning & Configuration
- Smooth motion, low motor heating
- Idle current reduction

## EM-S Series



PUL&DIR

- 5V or 24V control signal selection
- Step & Dir or CW/CCW
- Fault and brake output
- up to 500Khz frequency
- Software configurable

## EM2RS Series



Modbus

- Isolated RS485 Modbus
- Internal Indexing
- Anti-resonance
- Single-axis control commands
- PLC / HMI / external I/O input

## EM3E Series



EtherCAT

- CiA402, 100Mbps full-duplex
- PP, PV, CPS, Homing
- Compatible with major
- EtherCAT master controllers
- Low noise, heating, vibration
- Smooth motion

# Motion Controller



## CS Series



- Step & Dir or CW/CCW control mode
- Alarm/ in-position output
- Enable input and error reset input
- Idle current reduction
- RS232 port for tuning

## CS2RS Series



- Standard isolated RS485 / Modbus-RTU
- No loss of step& smooth motion
- Build-in single axis control command
- PLC/ HMI/ External I/O input

## CS3E Series



- CiA402, 100M bps full-duplex
- Support PP, PV, CPS & Homing modes
- Low noise and vibration, no loss of step
- Compatible encoder resolution 1000, 2500, 5000 CPRs

# AC Servo



## Economical

### EL6



- Input voltage  
1ph 220VAC
- Power ratings  
400W-1000W
- Precise position control for  
simple applications
- 23-bit magnetic/optical encoder

## General

### EL7



- Input voltage  
1ph 220VAC/3ph 400VAC
- Power ratings  
400W-7500W
- STO SIL3 (EC/PN), Easy servo  
tuning
- 23-bit magnetic/optical encoder

## Excellent

### EL8



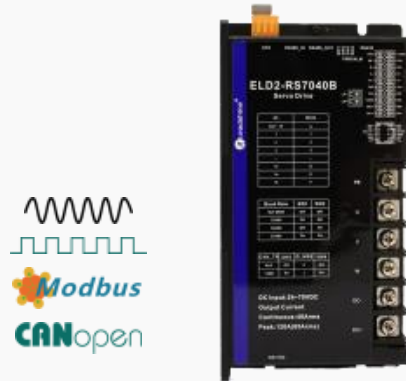
- Input voltage  
1ph/3ph 220VAC
- Power ratings  
400W-2000W
- Response frequency: 3.5kHz
- STO SIL3, Full closed loop  
control, Gantry functions
- 23-bit magnetic/optical encoder

# DC Servo



## Single Axis

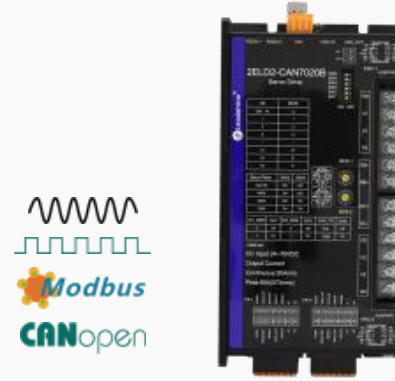
### ELD2



- Input voltage  
24-70VDC
- Current ratings  
5-64A (Peak: 180Arms)
- STO SIL3, logic circuit, Integrated brake power supply
- 2500ppr incremental & 17 bit absolute magnetic encoder

## Dual-Axis

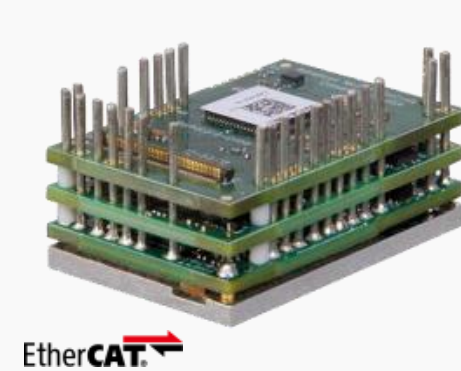
### 2ELD2



- Input voltage  
24-70VDC
- Current ratings  
20/30A (Peak: 180Arms)
- STO SIL3, logic circuit, Save space and installation work
- 2500ppr incremental & 17 bit absolute magnetic encoder

## Single Axis

### ELD3-mini



- Input voltage  
12-60VDC
- Current ratings  
5-20Arms (Peak: 60A)
- Gantry function, STO, supports 3rd party motor
- 2500ppr incremental & 17 bit absolute magnetic encoder

# Integrated Motor



## iEM Series Open Loop Stepper



PUL&DIR  Modbus

- Input 20-36VDC, NEMA17 motor
- Input 20-50VDC, NEMA23 motor
- Support step & dir, Modbus-RTU
- 3 digital inputs, 1 digital output

## iCS Series Closed Loop Stepper



PUL&DIR  Modbus

- Input 20-36VDC, NEMA17 motor
- Input 20-50VDC, NEMA23 motor
- Support step & dir, Modbus-RTU
- 3 digital inputs, 1 digital output
- 14-bit magnetic encoder

## iSV2 series integrated servo



PUL&DIR  Modbus **CANopen**

- Input voltage 24-60VDC
- Power ratings 200W/400W/750W
- Integrated configurable terminal resistor, cooling vent for optimal continuous operation
- 17-bit incremental magnetic encoder

# Motor Product



## Stepper Motor



- From NEMA 8 to NEMA 42 frame size
- Brake/waterproof/dual-shaft options
- High precision
- Low noise and heating

## Closed-loop Stepper Motor



- NEMA 11 to NEMA 42
- 1000/2500/5000 line encoder options
- High precision
- Low noise and heating

## AC Servo Motor



- 40/60/80/110/130/180mm
- 23-bit absolute multiturn magnetic/optical encoder
- 350% torque overloading
- IP 67 for motors with direct connectors (IP65 for aviation connectors)

## DC Servo Motor



- 40/60/80/110/130mm
- 17-bit absolute magnetic/2500ppr incremental encoder
- 250-300% torque overloading
- IP 65

# Accessories



## Power Supply



24V 36V 48V 60V

## Planetary Gearbox



24V 36V 48V 60V

## Cables



24V 36V 48V 60V 220V 400V

# ADVANCED SYSTEM

Ensure High Efficient and High  
Standard Delivery



- From NEMA 8 to NEMA 42 frame size
- Brake/waterproof/dual-shaft options
- High precision
- Low noise and heating

**EMC Test Center**

- Manufacturing environment test
- Machines research
- Fieldbus and network products test



**Application Test Center**



- EtherCAT
- RS485
- CANopen

**Fieldbus Test Center**

- Hi temperature test
- Low temperature test
- Humidity test
- Vibration test



**Environment Test Center**

# Technology and Production Test Center



1500+ m2 Lab

\$5million  
investment

Product Solution and Application Technology Center



Automatic Burn  
Test System



Final Quality  
Test System



Drive Automatic  
Assembling Line



Driver Intelligent  
Aging System

# Main Partners / Vendors



- Cooperation with world known electronic and semi-conductor suppliers to for highly reliable products;
- Cooperation with Research Institutes, Universities and other companies.
- Dedication to provide highly intelligent, accurate, reliable motion control products and solutions.

The Toshiba logo features the word "TOSHIBA" in a bold, red, sans-serif font.The Samagawa logo features the word "Samagawa" in a blue, stylized script font.The Texas Instruments logo features a red outline of the state of Texas with a white "ti" inside, followed by the words "TEXAS INSTRUMENTS" in a black, sans-serif font.The Infineon logo features the word "Infineon" in a blue, sans-serif font, with a red swoosh underline.The Rubycon logo features the word "Rubycon" in a black, stylized script font, set against a yellow oval background.The Broadcom logo features a red stylized "A" shape above the word "BROADCOM" in a black, sans-serif font.The SAP logo features the word "SAP" in a white, sans-serif font, set against a blue rectangular background.The Mitsubishi logo features a red three-diamond symbol above the word "MITSUBISHI" in a black, sans-serif font.

# Quality Assurance



## Standard



- Participation member of China national industry standard "General Technical Conditions for Stepper Motor Drives".

## Certificate



- ISO 9001:2008, CCC, CE, RoHS

## Process



- 128-hour product aging test
- 28 quality inspection and monitoring procedures
- 100% full inspection system

## Management



- TQM advanced management system certification
- PDCA cycle

# Main Clients



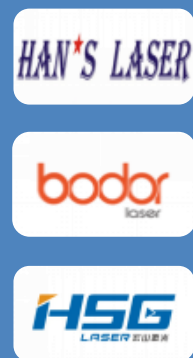
- Leadshine is committed to providing customers with a complete set of product solutions that are more intelligent, more accurate and more reliable.
- Products are widely used in semiconductor, 3C electronics, new energy, special machine tools, logistics AGV, packaging and other industries.
- Established extensive cooperation with many well-known universities and scientific research institutions at home and abroad.

## 3C Electronics



Well-known Universities  
and Research Institutions

## CNC Machinery



## Logistics



## Semiconductor



## New Energy



## Medical



# Achievements



- 20M+ controlled servo and stepper axes in the field
- 10K+ OEM client from 60+ countries
- 1st motion controller company in China
- 1st stepper servo inventor in China
- 1st EtherCAT stepper drive designer in China
- No.1 stepper drive sales in the world
- No.1 closed-loop stepper sales in the world

# Achievements



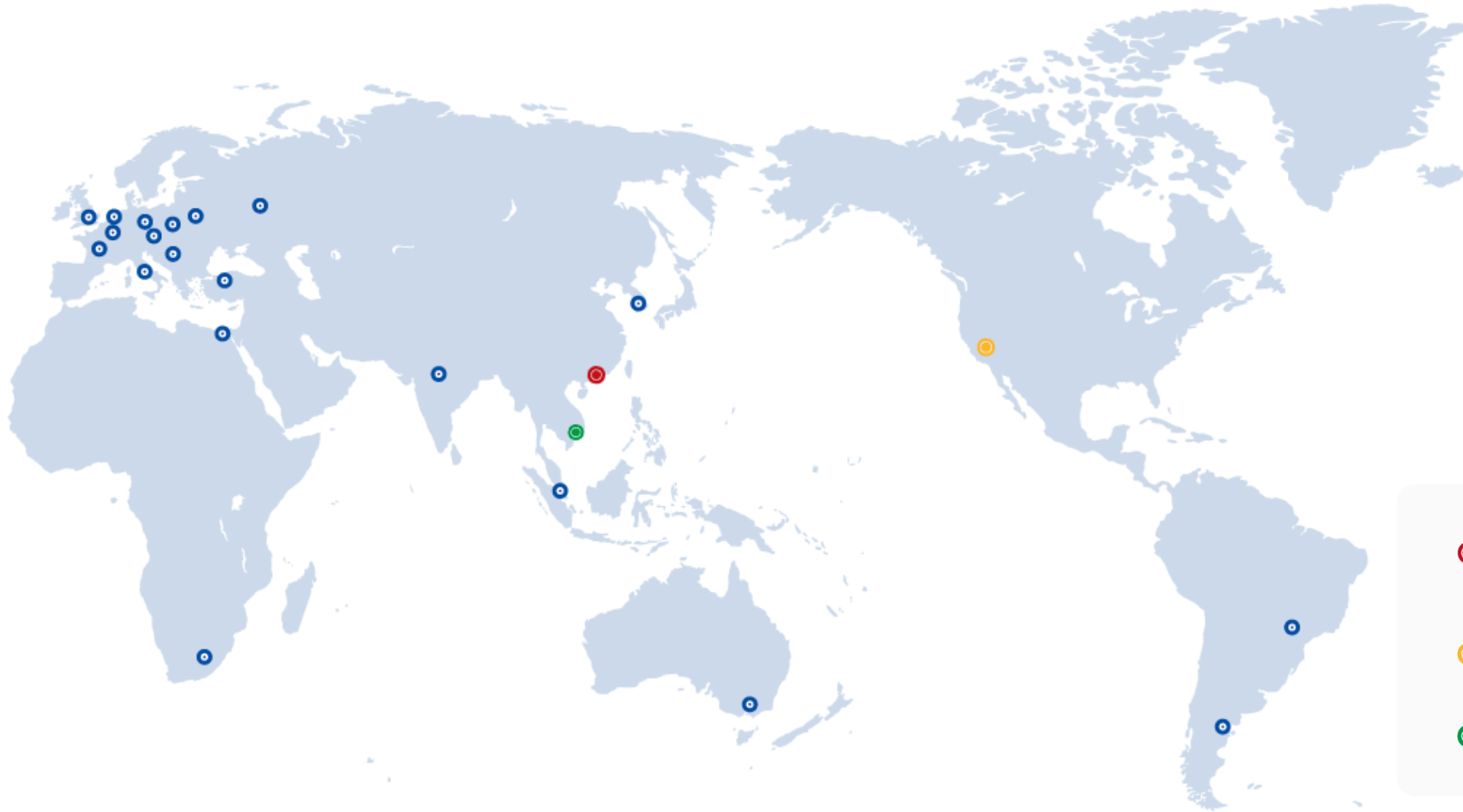
## National Awards

- High-tech enterprise of Nation
- Innovation Award of China industry-university-research
- Cooperation Practice base of Postdoctoral
- New Record Award of Chinese enterprises
- 1st Brand Award in stepper driver in China

## Regional Awards

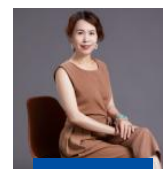
- Top 50 fast growing enterprises in Shenzhen
- Top 10 industrial robot enterprises in Shenzhen
- Shenzhen Hi-Tech enterprise
- TQM advanced management system certification
- Most satisfied brand award in Shenzhen
- Annual management award in Shenzhen

# Global Network



-  Headquarters  
Leadshine Technology Co., Ltd.
-  North America Office  
Leadshine America, Inc.
-  Vietnam Representative Office

# Overseas Team



**Linda**  
General Manager

HRBP

## Product



**Clark**  
Product & Application  
Director

- Stepper line



- Servo line



- Application



## Sales



**Gary**  
Sales Director

- Asia team



- America team



- European team



## Marketing



**Carol**  
Marketing Manager

- Design



- Promotion



## Operation



**Wendy**  
Operations Manager

- Finance



- Customs affair  
& logistics



- Others



## Commerce



**Phelix**  
E-commerce Manager

- Operation



- Support



Total: +86 755 26411692



**Help Customers Succeed Share Value of Success**

---

[www.leadshine.com](http://www.leadshine.com)